

Christchurch Road, Brixton Hill, SW2

1 bedroom flat - purpose built for sale

£325,000

Share of Freehold

Property Details

A stunning one double bedroom apartment with a private terrace boasting peaceful courtyard views, set on the third floor of an elegant Art Deco gated mansion block with video entry-phone system, lift access, caretaker, bike storage, and off-street parking available on application. Quietly positioned away from the road, this bright and airy home enjoys excellent natural light and privacy. Uniquely, the kitchen and reception have been opened into one generous space, perfect for entertaining or relaxing. High ceilings, modern white cabinetry with integrated appliances, and a sociable breakfast bar complete this inviting room, which also has ample space for dining or a home office setup. A patio door opens onto a private, covered terrace—ideal for enjoying morning coffee or dining al-fresco year-round. The spacious double bedroom features large windows, room for full furnishings, and contemporary flooring, while the stylish bathroom offers a bath with rain shower, neutral décor, and thoughtful storage. Residents benefit from landscaped communal grounds, bike shed, caretaker, and gated entry, all within this beautifully maintained Art Deco setting.

Council tax band B

EPC rating C (75)

Features

- One double bedroom
- Private terrace with courtyard views
- Secure gated Art Deco building
- Quiet position within the building
- Beautifully presented
- Communal grounds, lift and bike storage
- Streatham High Street a six-minute stroll
- Ten-minute walk to the station
- Brixton, Clapham, Balham and Tulse Hill all within walking distance
- Share of freehold

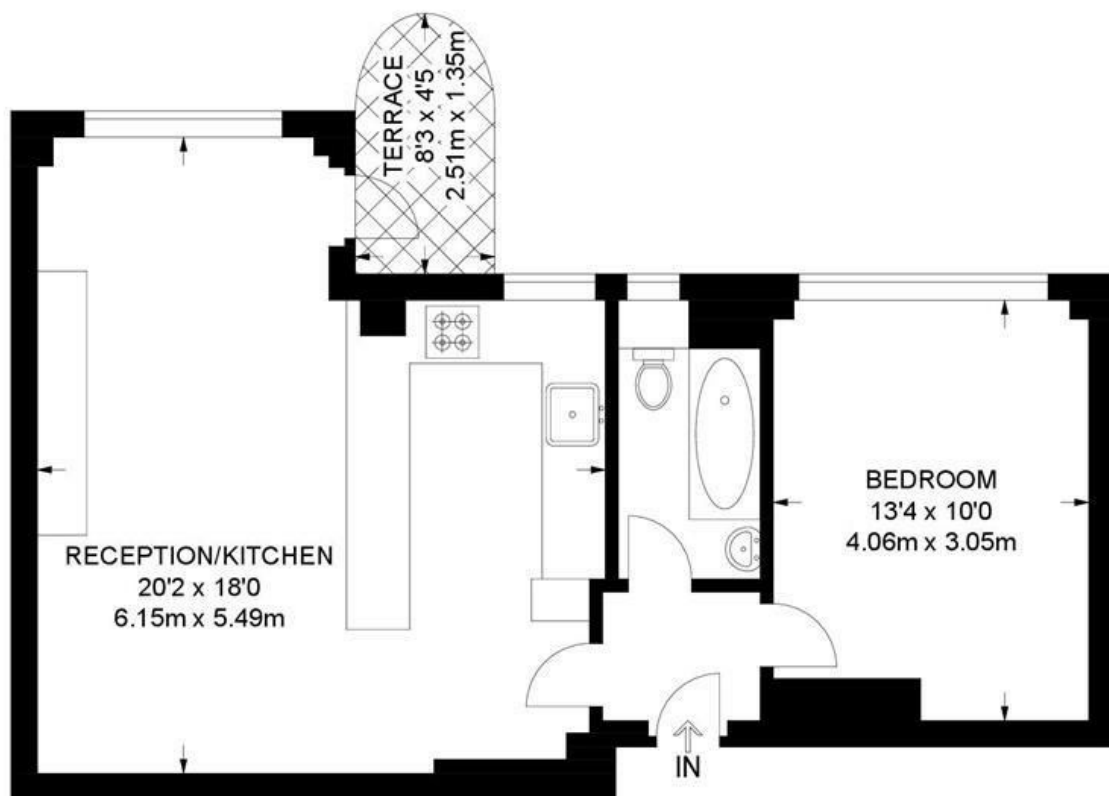


Christchurch Road, Brixton Hill, SW2

Christchurch Road, SW2

1 Bedroom Flat

APPROXIMATE GROSS INTERNAL AREA: **522 SQ FT / 48.5 SQ M**



THIRD FLOOR



While we try our very best, floor plans are produced as a guide only and we take no responsibility for the precise accuracy with which any property is represented.

Christchurch Road, Brixton Hill, SW2

